



Build own server

Sometimes customers need to control many screens and want to use their own server, which will be faster to sending programs.

Two methods to building server:

1. Xixun Company provides following things:

- a. User name and password
- b. Provide server IP /domain name for controller connects with server; default port to monitoring controller is **50001**
- c. Provide server IP/domain name for software connects with server, default port to monitoring user **50000**

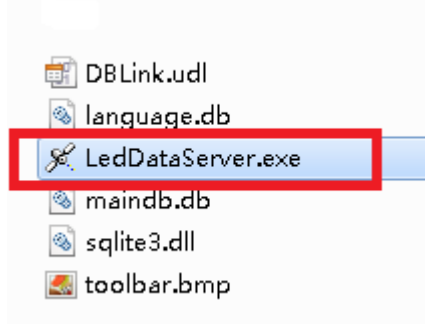
2. Customers build it totally by themselves:

Preparations:

- a. Hardware: PC with stable windows system always gets access to internet and power on.
- b. Software: LEDdataserver.exe provided by Xixun Company. Key provided by xixun engineer.
- c. Static IP address
- d. If not static IP address then need has a DNS.

Steps for method 2:

Step1, PC gets internet through router then running LedDataServer.exe software

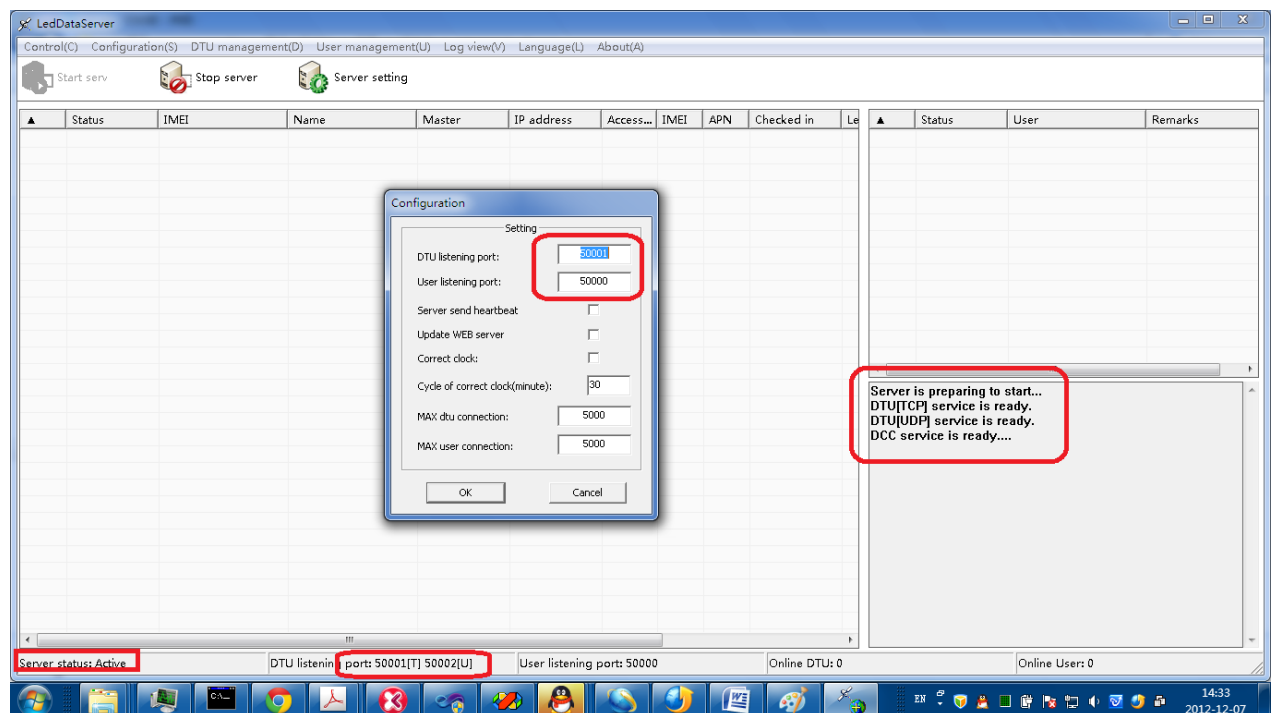


Step2, after installing it, click on Start server button and then click on Server setting and then setup parameters as following:

Set 50001 for DTU listening port

Set 50000 for user listening port

When you setting these parameters, on the right part will see the corresponding status information



Step3, set port forwarding in Router, Forwarding port 50000-50002 to server, IP address is the server's IP in LAN.

Login the router and then enter port forwarding, enter the port range 50000~50002 for private IP (that is the LAN IP address of the server PC).



Note: each router's interface is different maybe; here we just take one for example:

Product Page : DIR-615 Firmware Version : 7.09

D-Link **T.M.**

DIR-615 // **SETUP** **ADVANCED** **MAINTENANCE** **STATUS** **HELP**

Port Forwarding

ADVANCED PORT FORWARDING RULES

The Advanced Port Forwarding option allows you to define a single public port on your router for redirection to an internal LAN IP Address and Private LAN port if required. This feature is useful for hosting online services such as FTP or Web Servers.

ADVANCED PORT FORWARDING RULES

Remaining number of rules that can be created: 19

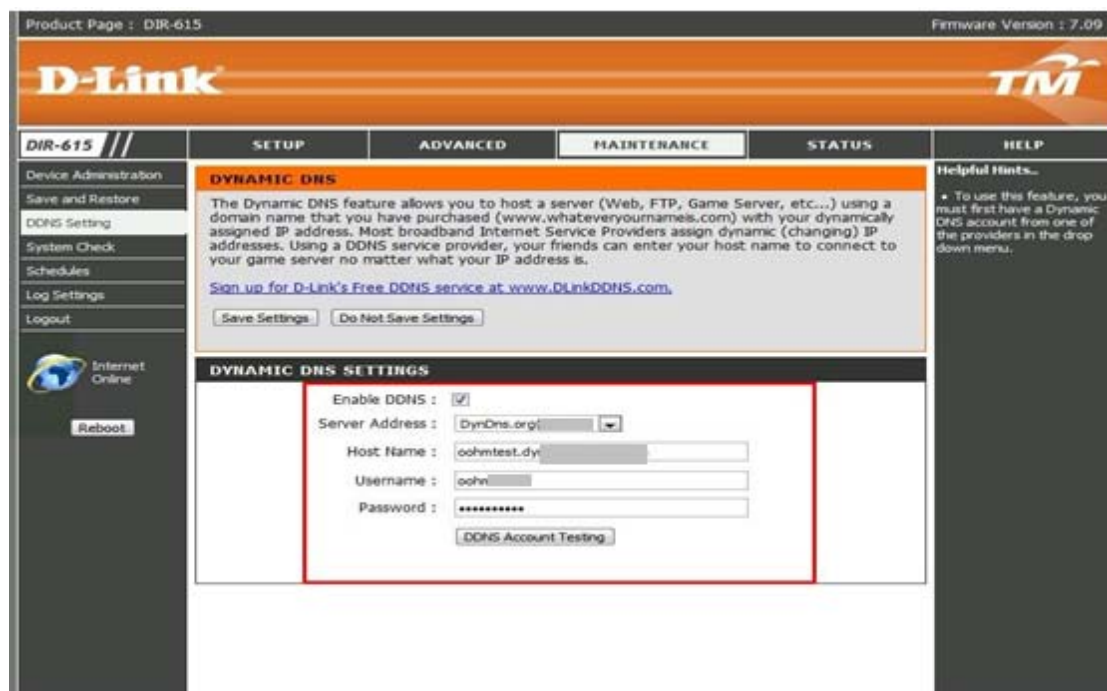
Name	Private IP	Public IP	Port	Traffic Type
<input checked="" type="checkbox"/> LedDataServer	192.168.0.102	192.168.0.102	Public Port: 50000 ~ 50001 Private Port: 50000 ~ 50001	Any
<input type="checkbox"/>			Public Port: ~ Private Port: ~	Any
<input type="checkbox"/>			Public Port: ~ Private Port: ~	Any
<input type="checkbox"/>			Public Port: ~ Private Port: ~	Any

Helpful Hints..

- Check the **Application Name** drop-down menu for a list of pre-defined applications that you can select from. If you select one of the pre-defined applications, click the arrow button next to the drop-down menu to fill out the appropriate fields.
- This feature allows you to open a range of ports to a computer on your network. To do so, enter the first port in the range you would like to open on the router in the first box under **Public Port** and last port of the range in the second one. After that you enter the first port in the range that the internal server uses in the first box under **Private Port** and the last port of the range in the second.
- To open a single port using this feature, simply enter the same number in both boxes.

Step4, if server IP is not static then should use DNS. Apply a valid Domain name in advance and download the customer-side. Please login domain name in router or login customer-side.

Or login the DNS in router, here, take one router for example:



If server PC has static IP address then no need to do anything in this step.

Step5, apply a new user name and password for your end customers

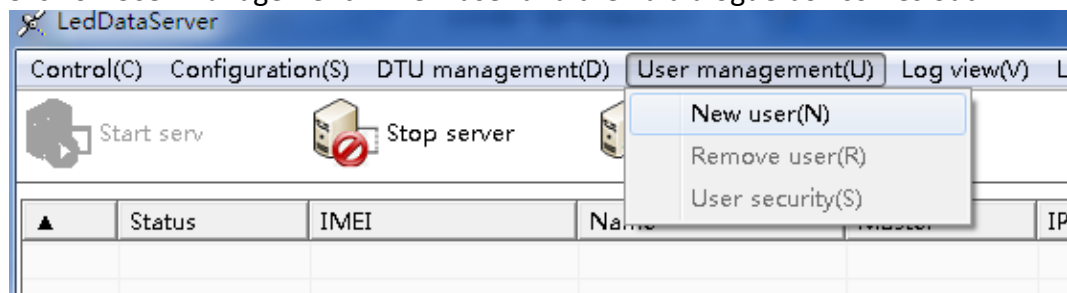
Take one for example:

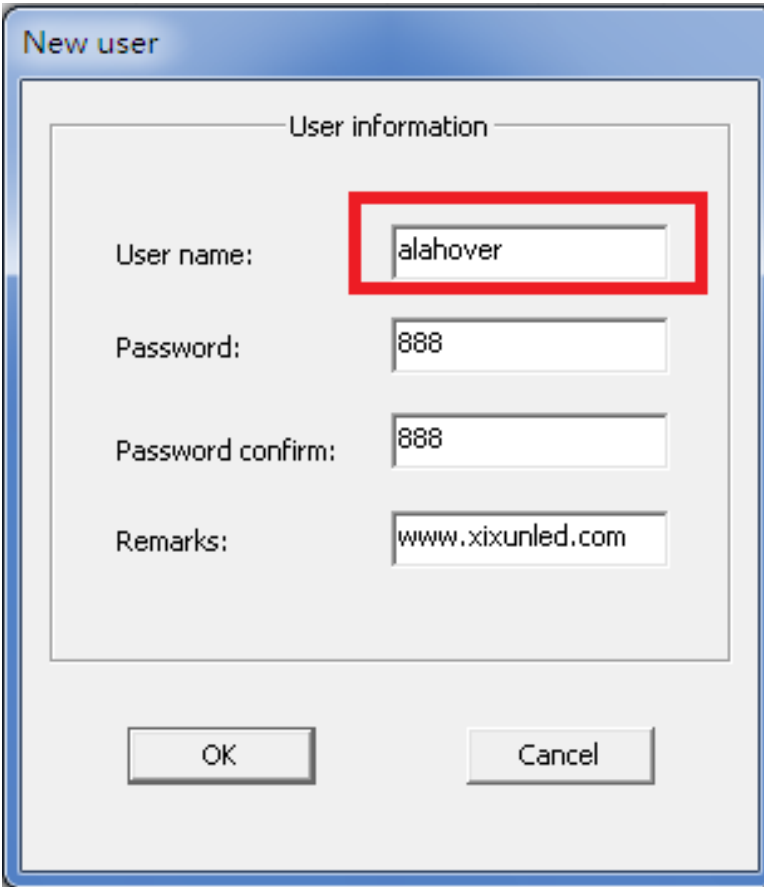
User name: alahover

Password: 888

Remarks: shanghai xixun Company

Click on User management-→new user and then a dialogue box comes out:





A "New user" dialog box with a blue title bar. It contains a "User information" section with four input fields: "User name:" (containing "alahover", highlighted with a red rectangle), "Password:" (containing "888"), "Password confirm:" (containing "888"), and "Remarks:" (containing "www.xixunled.com"). At the bottom are "OK" and "Cancel" buttons.

LedDataServer

Control(C) Configuration(S) DTU management(D) User management(U) Log view(V) Language(L) About(A)

Start serv

Stop server

Server setting

▲	Status	IMEI	Name	Master	IP address	Access...	IMEI	APN	Checked in	Le	▲	Status	User	Remarks
1	online ●	M31-412-00001	M31-412-00001	alahover	58.247.9.162	Cable			15:22:20 201...		1	offline	alahover	www.xixunled.com

Step6, opening lededitorV9 software and then login this user name and password, then will see the user online status and see your DTU: M31 card's serial number.